

REQUEST FOR PROPOSALS
Solicitation Number: R-13-027-MR

**DESIGN AND IMPLEMENTATION FOR AN INTERACTIVE
LANDSCAPING TOOL**

ADDENDUM #1 – 05:10 PM Central | June 12, 2013

This addendum provides answers to written question submissions.

ANSWERS TO QUESTIONS

1. How many plants does SAWS intend to include in the plants database?
 - a. No more than 500 at this point but will scale in the future.
2. Within the plants database, how many different parameters and properties will each plant have (if any)?
 - a. Around 50; however, for general search purposes we'll search on 5-10 fields. For advanced fields, we've discussed adding half of those fields for narrowing down plant choice.

Two examples of this functionality are:

NPIN

<http://www.wildflower.org/collections/collection.php?all=true>

EasyBloom

<http://www.easybloom.com/main/plantlibrarysearch?uq=Enter+Plant+Name...&ubS=Search>

3. Could SAWS provide some detail on what is expected for the landscaping tool? Is it just placement of different plants within a set landscape map, or does the contractor need to allow the creation of multiple maps and layouts? Also, once the user places the plants, is there analysis to determine total water usage, or other parameters and properties?
 - a. An attached the storyboard is provided for clarification.
4. Does the mobile version of the tool have to have the exact same functionality as the desktop version? If not, what level of functionality it required?
 - a. The mobile version for content should be a representation of the main site. The requirement we are looking for here is to make sure the functionality of the landscape design tool is functional on mobile technology. For example, I should be able to drag and select items as I would on the desktop version. We are wanting the tool to be functional for SAWS consultants in the field and we anticipate they may be using tablets and laptops.
5. Does certification as an MBE by the National Minority Supplier Development Council qualify at meeting the definition of MBE required by this solicitation?
 - a. SAWS recognizes certification from the South Central Texas Regional Certification Agency, the Texas Historically Underutilized Business (HUB) Program, and federal SMWB designation (as found on the System for Award Management, aka "SAM" website). SAWS does not recognize certification from the National Minority Supplier Development Council.

END ANSWERS TO QUESTIONS

No other items, dates or deadlines for this RFP are changed.

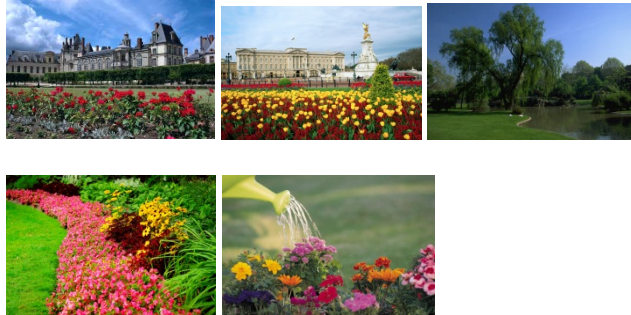
END ADDENDUM #1

Landscape Design Center Storyboard

<p>Statement of Purpose</p> <p>Introduction to Pre-Plans and <TBD Name (Templates)></p> <p>Topics: How to approach Landscaping & Water Savings Supporting Graph of Water Use for Turf</p> <p><links> Consultations/Rebates</p> <p>Choose a path...</p> <div style="display: flex; justify-content: space-around; margin-top: 10px;"> <div style="border: 1px solid black; background-color: #c0392b; color: white; padding: 5px 15px; border-radius: 5px;">Pre-Plans</div> <div style="border: 1px solid black; background-color: #3498db; color: white; padding: 5px 15px; border-radius: 5px;">Templates</div> </div>	<p>Development/Design/Content Tasks</p> <ul style="list-style-type: none"> Content: Need Statement of Purpose Content: Need name of Template Plans – Strongly suggest we use the Garden in the Box name Content: Need numbers and supporting Graph for Turf Water use Content: Need Links to Consultations/Rebates Content: Need explainers for Pre-Plans/Templates Design: Need layout for page. <p>Technology Needed HTML</p>
<p>Pre-Plans (We will be providing the 5 pre-plans that were developed for Conservation) – Choose Lot Size</p> <p>Choose Lot Size</p> <div style="border: 2px solid black; padding: 10px; margin-top: 10px;"> <p>Single Family Cul-De-Sac ½ Acre Home</p> </div>	<ul style="list-style-type: none"> Content: explainer for choosing lot size Content: List of Lot Sizes Design: Layout for Choose Lot Size <p>Technology Needed HTML</p>

Pre-Plans – Choose Layout

List of lots - 5 different style lots will be presented.
Choose one layout



Lot Sizes

Single Family
Cul-De-Sac
½ Acre Home

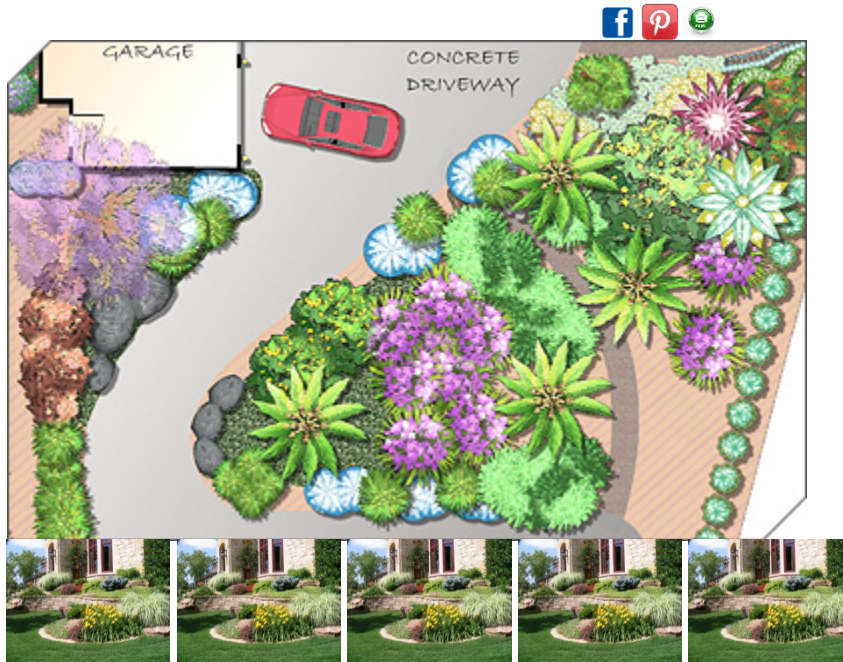
- Content: Explainer of the lot types
- Design: Images of the lot types
- Development: Include list of lot sizes to change the plans. User would select the list to change.

Technology Needed
HTML

Pre-Plan – Detailed Page

The page will present the customer with the layout they selected. It will show photos, the layout and explainer.

Photos – Slideshow Format



- Content: Explainer of the plan
- Content: Photos of layout and renderings
- Design: Layout of page
- Design: Slideshow presentation
- Development: Slideshow functionality
- Development: Share plan to social media sites Facebook, Pinterest
- Development: Print – Send to Print Detailed Page

Technology Needed
HTML, JS, JQUERY, AJAX,
HTML5, API for FB/Pinterest

The photo will include the main layout and renderings of the plan. The customer can share it on Facebook and Pinterest or print a shopping list

An explainer will be presented to discuss the plan.

Templates: Pre-Selected areas from the main designs. As the “Garden in the Box” plans are build they will be added to the list

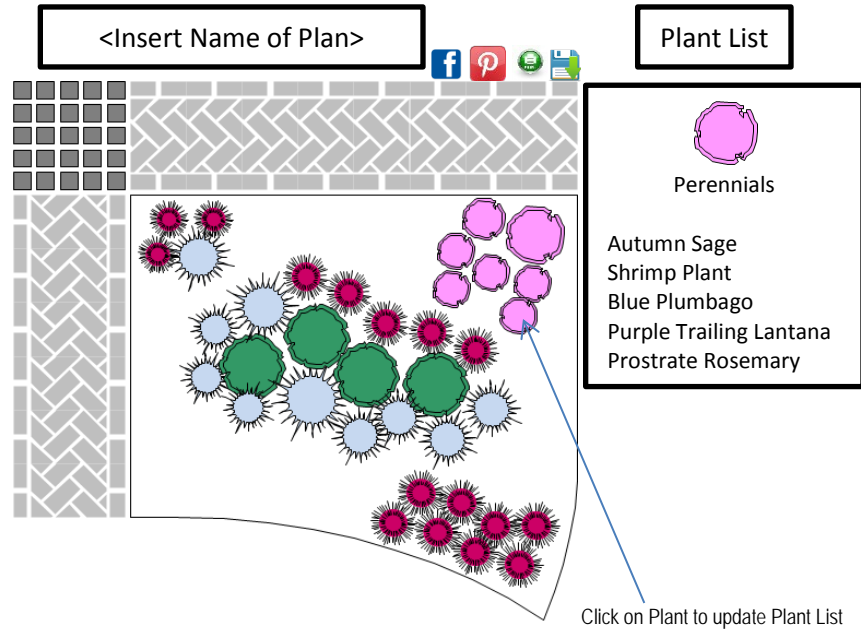
Choose Template (Issue/GIB)

- Side Strip
- Inferno Strip
- Shade Bed
- Thin Soil Bed

- Content: Explainer for choosing template
- Content: List of Templates
- Design: Layout for Choose Lot Size

Technology Needed
HTML

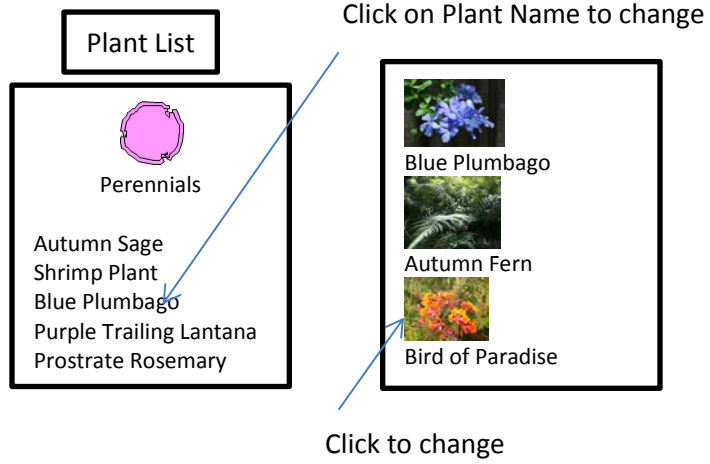
Template: Detailed plan based on chosen template



- Content: Explainer
- Design: Template Layouts
- Design: Canvas for Template and Plant selection
- Design: Plant Type Identifiers
- Development: List of templates and plants
- Development: Save – locally saved for retrieval
- Development: Facebook, Pinterest – share plans to social media
- Development: Click on plant image to update Plant list
- Development: Click Plant List to reorder
- Development: Click on Plant List name to change plant name based on similar plants from Plant DB
- Print: Send to Print Detailed Page
- Email: Send plan to Email Detailed Page

Technology Needed
HTML,HTML5, AJAX, JQUERY, SOAP/REST, Web Services

Template: Plant List Functionality



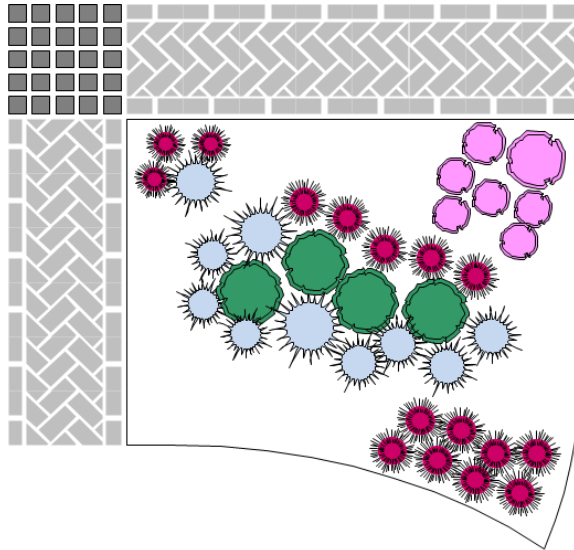
- Development: Click on Plant List name to change plant name based on similar plants from Plant
- Design: Plant Name change area
- Design: Plant images

Technology Needed
HTML, HTML5, JS, SOAP/REST,
AJAX, Web Service

Shopping List (Pre-Plan & Templates will have the same functionality)

<insert printer friendly button>

<insert email button>



Shopping List - <Insert Name of Plan>


 Perennials



Primary Choice: Blue Plumbago (6)

Secondary Choice:

- Autumn Sage
- Shrimp Plant
- Purple Trailing Lantana
- Prostrate Rosemary

 Succulents



Primary Choice: Soft Leaf Yucca

Secondary Choice:

- Red Yucca
- Twist Leaf Yucca

<Fill out until all plants are accounted – Need to discuss how to organize list in relation to plan>

<Insert Instructions>

<Insert Consultation Message>

<Insert Rebate Message>

- Design: Layout for printed page
- Content: Instructions which includes mulching advice
- Content: Rebate information
- Content: Consultant Information
- Content: Organization of shopping list? Organize by plant type, plan, alpha?
- Development: Retrieving Shopping List from plans
- Development: Printer Friendly Version

Technology Needed
HTML,HTML5, AJAX, JQUERY,
SOAP/REST, Web Services

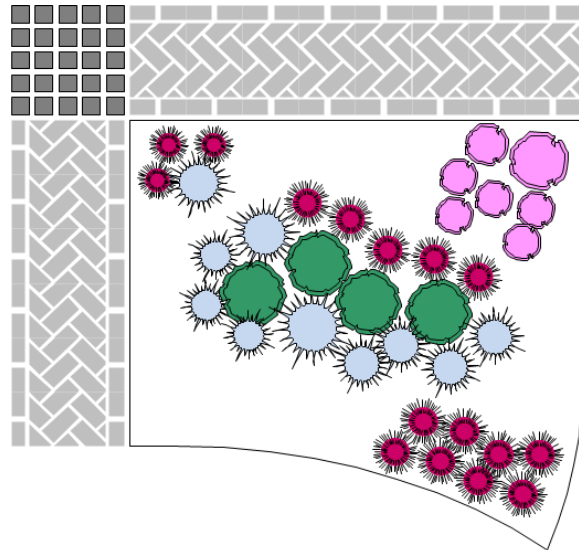
Email – When the email button is clicked from the detail and shopping list page it will send the plan and shopping list to selected email.

Send Form

Email To:
Email From:
Subject: <Prefilled Message>
Comment: <not Required>

Message

Email To:
Email From:
Subject: <Prefilled Message>
Comment: <not Required>



Shopping List - <Insert Name of Plan>

 Perennials



Primary Choice: Blue Plumbago (6)

Secondary Choice:
Autumn Sage
Shrimp Plant
Purple Trailing Lantana
Prostrate Rosemary

- Design: Layout of email form
- Content: Subject Message and Comment
- Development: send message contents and plan image.

Technology Needed
HTML,HTML5, ADO



Succulents



Primary Choice: Soft Leaf Yucca

Secondary Choice:

Red Yucca

Twist Leaf Yucca

<Fill out until all plants are accounted – Need to discuss how to organize list in relation to plan>

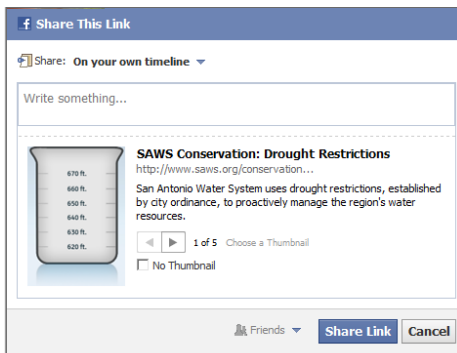
<Insert Instructions>

<Insert Consultation Message>

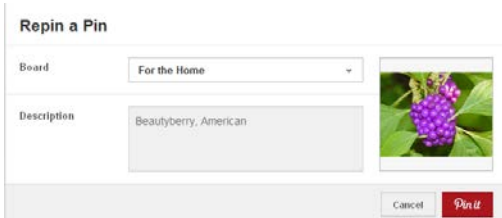
<Insert Rebate Message>

Share – Enable the ability to share plans via Facebook and Pinterest

Facebook – When the FB button is clicked it will send a link to the customers wall



Pinterst – When the Pinterst button is pressed any image can be posted. Will encourage to post plans or plants

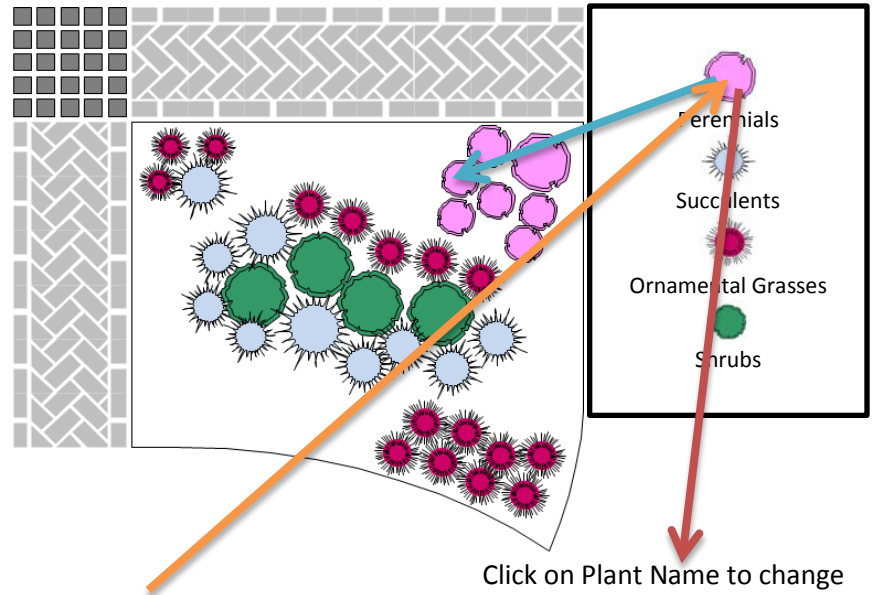


- Content: Messaging for FB post
- Content: Should we link the actual plan or the starting page?
- Development: Code for FB & Pinterest

Technology Needed
HTML, JS, API FB & Pinterest

Admin Tool – The tool will allow the consultants to build plans

<insert upload image for layout>



Click on Plant Name to change

Steps to add Plant

1. Upload layout
2. Click on Plant Type
3. Choose plants name list
4. Place on layout
5. Can resize image
6. Save/Publish



Click to change

Design: Canvas layout
Design: Images for plants
Design: Plant Name list
Development: Upload Image
Development: DB call for plants
Development: Drag/Drop onto plan; save plant list to plant position
Development: Save plan while building
Development: Publish plan to website

Technology Needed
HTML,HTML5, AJAX, JQUERY,
SOAP/REST, Web Services